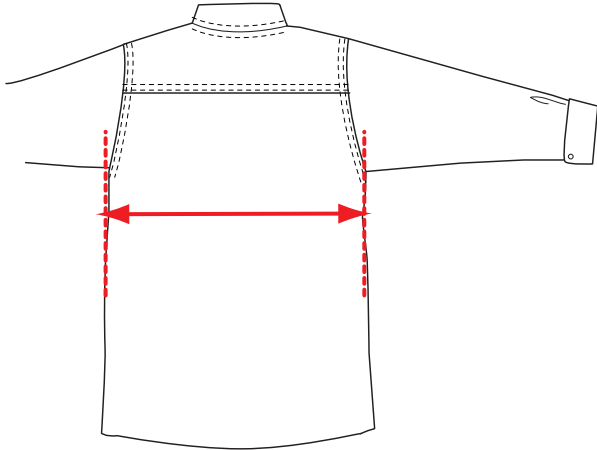
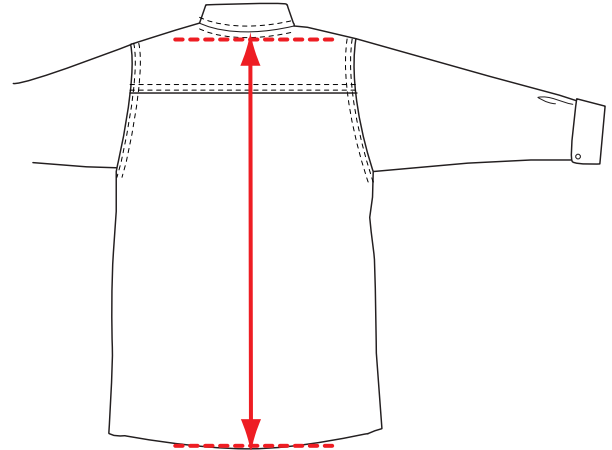


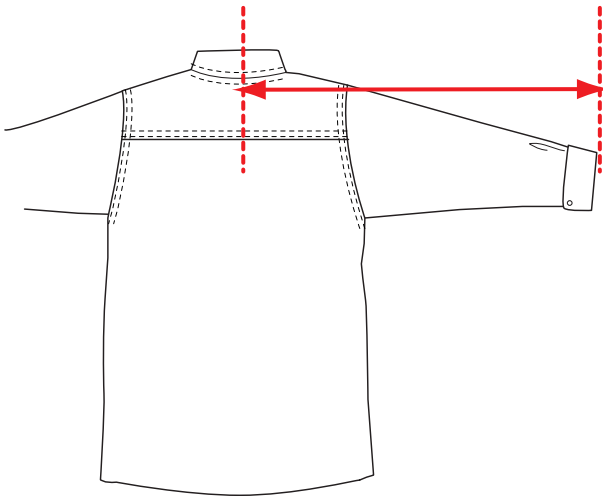
# Measuring Points



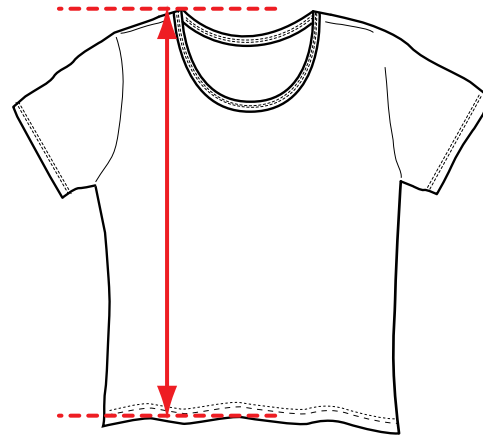
- 1) Width - 1" under armhole, seam to seam.



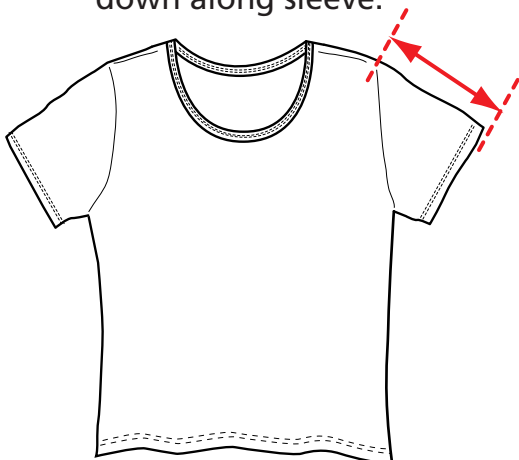
- 2) Center back length (CBL). Center to back, from neck seam to bottom of hem.



- 3) Center back (CB) sleeve length - find center point of back by finding the 1/2 way point between shoulders. Measure across to shoulder, then down along sleeve.



- 4) Center front length from high point of shoulder (HPS) - front highest point on the shoulder, not the collar, to the bottom hem.



- 5) Sleeve length from shoulder - from top seam of sleeve to end of hem.