

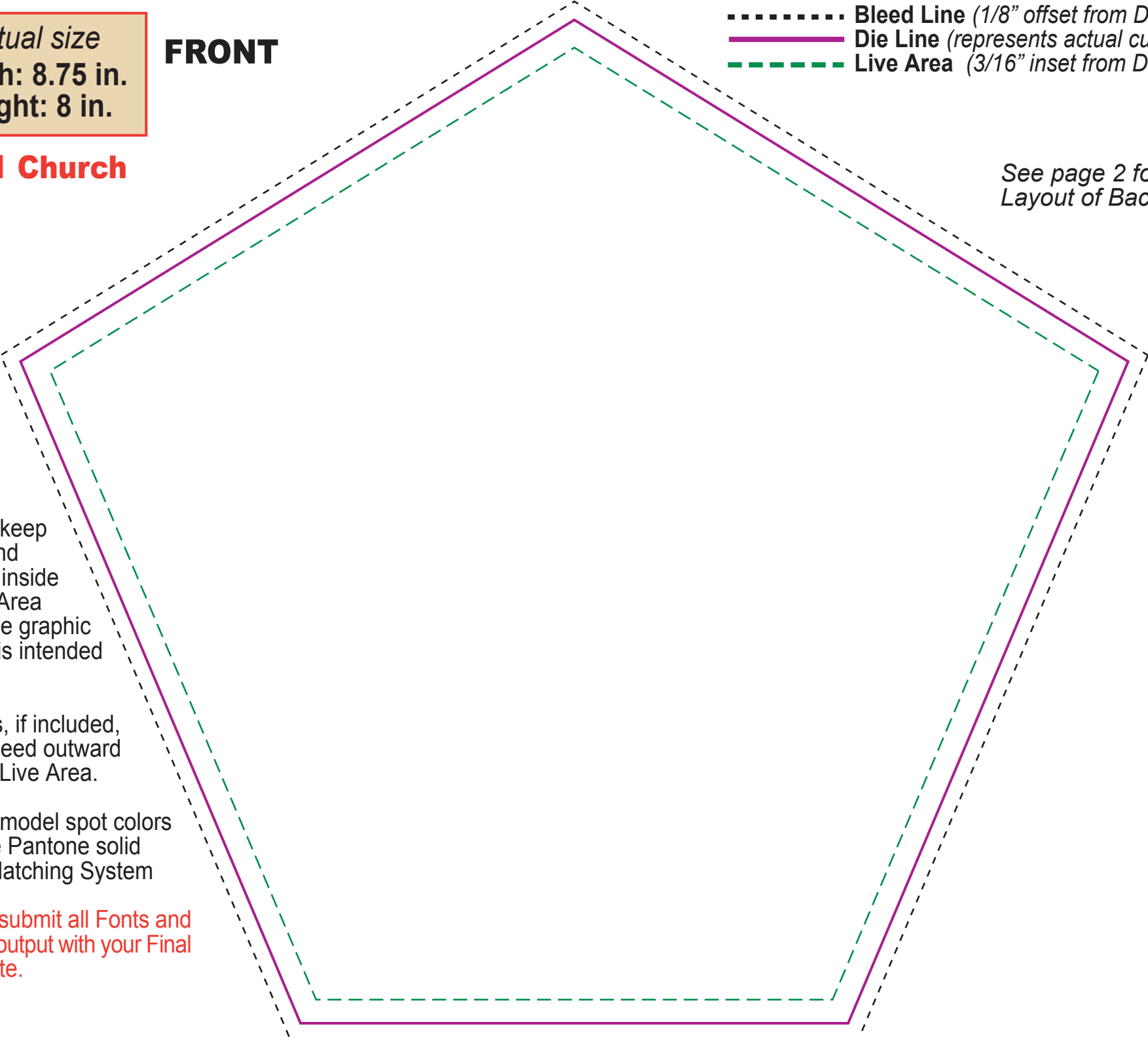
*Actual size*  
**Width: 8.75 in.**  
**Height: 8 in.**

# FRONT

..... **Bleed Line** (1/8" offset from Die Line)  
———— **Die Line** (represents actual cut product)  
- - - - **Live Area** (3/16" inset from Die Line)

## BF-11 Church

*See page 2 for  
Layout of Backside.*



- Please keep all text and graphics inside the Live Area unless the graphic element is intended to bleed.
- Borders, if included, should bleed outward from the Live Area.
- Please model spot colors using the Pantone solid coated Matching System
- Please submit all Fonts and Links for output with your Final Composite.

*Actual size*  
**Width: 8.75 in.**  
**Height: 8 in.**

**BACK**

- ..... **Bleed Line** (*1/8" offset from Die Line*)
- **Die Line** (*represents actual cut product*)
- - - - **Live Area** (*3/16" inset from Die Line*)

**BF-11 Church**

