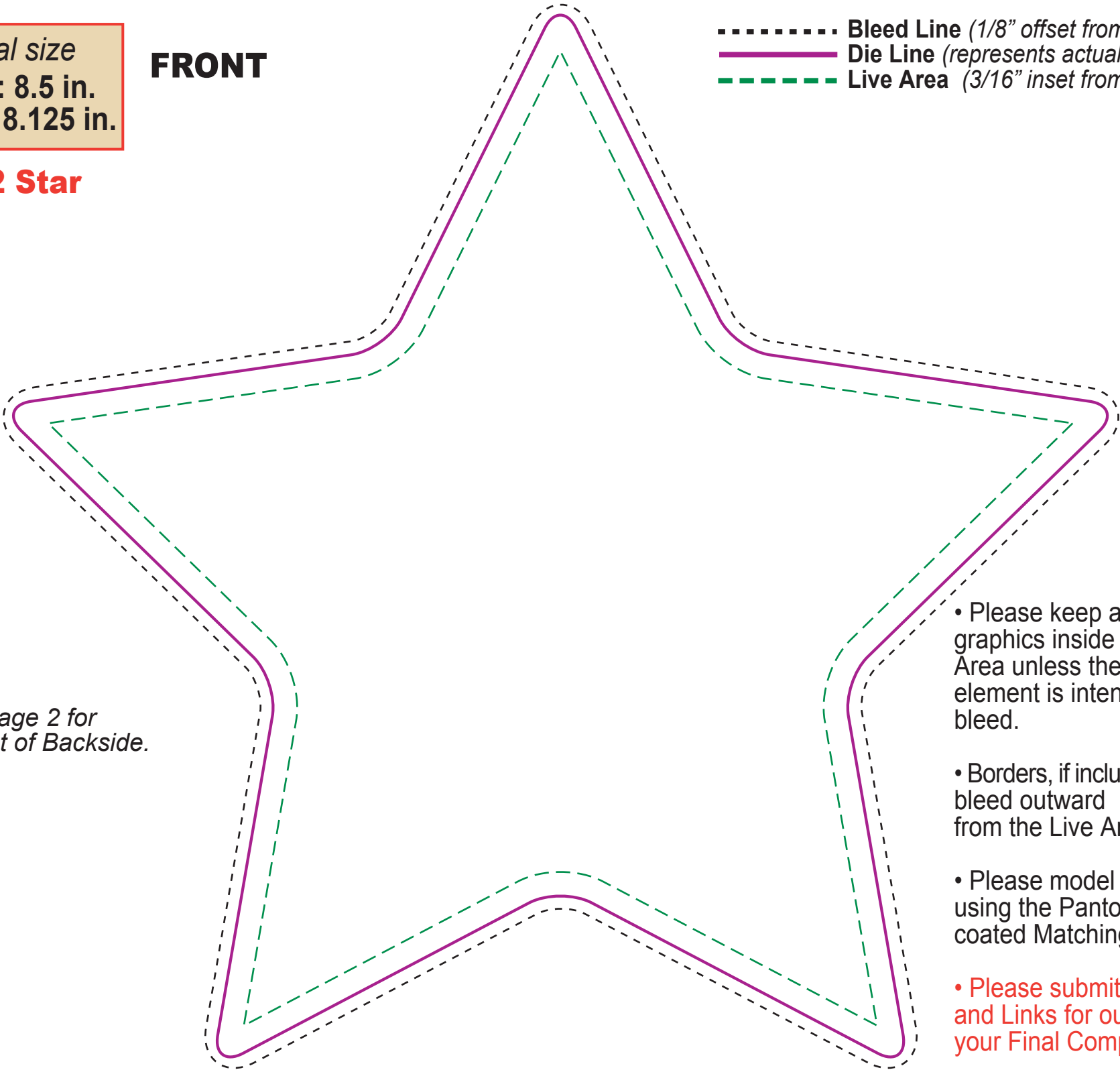


Actual size
Width: 8.5 in.
Height: 8.125 in.

FRONT

BF-42 Star

- **Bleed Line** (*1/8" offset from Die Line*)
- **Die Line** (*represents actual cut product*)
- - - - **Live Area** (*3/16" inset from Die Line*)



*See page 2 for
Layout of Backside.*

- Please keep all text and graphics inside the Live Area unless the graphic element is intended to bleed.
- Borders, if included, should bleed outward from the Live Area.
- Please model spot colors using the Pantone solid coated Matching System
- Please submit all Fonts and Links for output with your Final Composite.

Actual size
Width: 8.5 in.
Height: 8.125 in.

BACK

BF-42 Star

- Bleed Line (1/8" offset from Die Line)
- Die Line (represents actual cut product)
- - - - Live Area (3/16" inset from Die Line)

