

*Actual size*  
**Width: 9 in.**  
**Height: 7.75 in.**

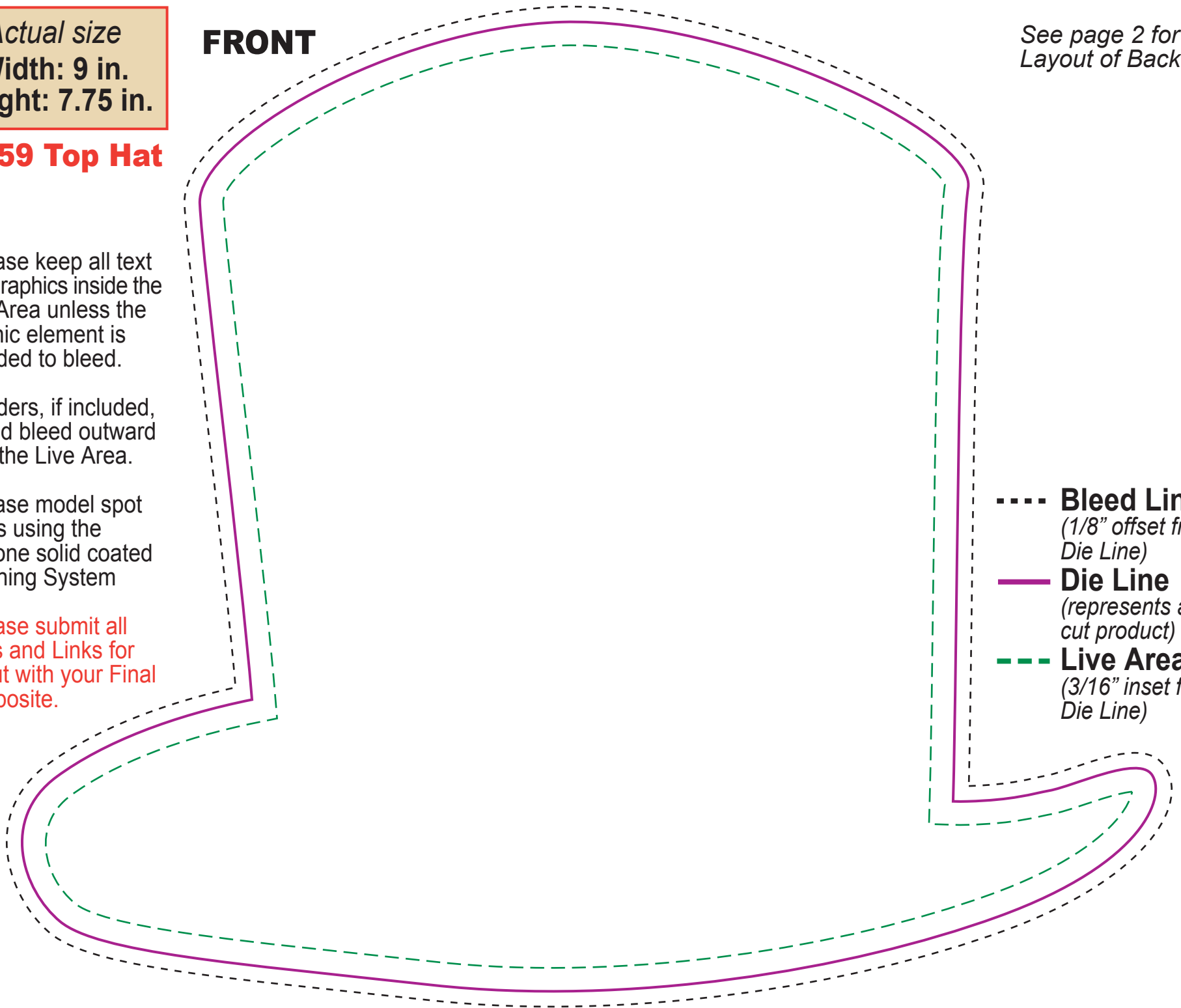
## FRONT

See page 2 for  
Layout of Backside.

### BF-59 Top Hat

- Please keep all text and graphics inside the Live Area unless the graphic element is intended to bleed.
- Borders, if included, should bleed outward from the Live Area.
- Please model spot colors using the Pantone solid coated Matching System
- Please submit all Fonts and Links for output with your Final Composite.

- **Bleed Line**  
(1/8" offset from Die Line)
- **Die Line**  
(represents actual cut product)
- - - - **Live Area**  
(3/16" inset from Die Line)



# BACK

*Actual size*  
**Width: 9 in.**  
**Height: 7.75 in.**

## **BF-59 Top Hat**

- Bleed Line**  
*(1/8" offset from Die Line)*
- Die Line**  
*(represents actual cut product)*
- - - Live Area**  
*(3/16" inset from Die Line)*

